



CREST Cyber Olympiad (CCO)

Previous Year Paper

Class 6 (Set - A)

Time Allowed: 1 hour

Maximum Marks: 45

- There are a total of **50 questions** in this booklet comprising **2 sections** namely the **Computer & IT and Achievers' Section** consisting of **40 questions (1 mark each) & 10 questions (2 marks each)** respectively.
- There is **no negative marking**. The use of a calculator is not permitted.
- There is **only ONE correct option** to a given question.
- The use of unfair means may result in the cancellation of the exam. Any such instances must be reported at **+91-98182-94134** or **info@crestolympiads.com**

DO NOT OPEN THIS BOOKLET UNTIL ASKED TO DO SO

FILL IN THE DETAILS

Candidate Name: _____

Class: _____ Section: _____

CREST ID: _____

Computers & IT (Each Question is 1 Mark)

1. Fill in the blank:

The process of keeping addresses in memory for future use is called _____.

- a. resolving
- b. caching
- c. routing
- d. framing

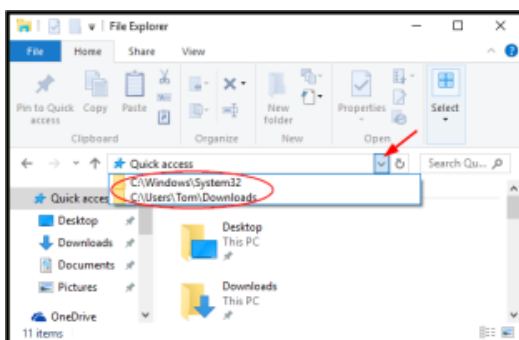
2. Which of these has the slowest speed of transmission?

- a. Coaxial Cable
- b. Microwaves
- c. Fibre-optic cable
- d. Twisted-pair cable

3. Which of the following is not one of the four major data processing functions of a computer?

- a. Software converts the command to decimal, SSD stores it, and the monitor acts as an input device.
- b. Hardware executes the binary command, RAM holds the instruction temporarily, and the monitor acts as an output device.
- c. Software uses a decimal number system to process the command, HDD stores the instruction, and the keyboard acts as an output device.
- d. Hardware converts the command to binary, ROM stores the instruction, and the printer acts as an input device.

4. The part of the File explorer displayed below is known as _____.



- a. navigation bar
- b. navigation buttons
- c. navigation pane
- d. address bar

5. What's the best way to protect your hard drive data?

- a. Take regular backups
- b. periodically defrag it
- c. run checkdisk at least once a week
- d. run scandisk at least once a week

6. Fill in the blank:

Applications like Adobe Flash which enables the viewing of special content on the browser known as _____.

- a. apps
- b. plugins
- c. javascript
- d. browser add-ons

7. Fill in the blank:

In PowerPoint the time required for transition from one slide to another can be changed by altering the _____.

- a. "Duration" field in the "Timing" group
- b. "Time" field in the "Timing" group
- c. "Duration" field in the "Effects" group
- d. "Time" field in the "Effects" group

8. Which shortcut key inserts a new slide in current presentation?

- a. Ctrl + N
- b. Ctrl + M
- c. Ctrl + S
- d. Ctrl + O

9. Fill in the blank:
You have been suggested to upgrade the CPU on your desktop, you are actually going to add an upgraded _____.
- multimedia speakers
 - processor
 - video graphics card
 - memory
10. Fill in the blank:
_____ network laid the foundation of the Internet.
- URL
 - ARPANET
 - ISP
 - INTRNET
11. In a MS Word document, what is the maximum number of columns that can be inserted in an MS Word Table?
- 43
 - 54
 - 63
 - 73
12. If you want to apply the new margin setting to all documents you open in MS Word, you will use which of the following option?
- Page Layout → Margins → Custom Margins → Margins tab → Set As Default
 - Page Layout → Margins → Custom Margins → Paper tab → Set As Default
 - Page Layout → Margins → Custom Margins → Layout tab → Set As Default
 - Page Layout → Margins → Custom Margins → Orientation tab → Set As Default
13. What is the term used for the process of copying the software in hard disk from secondary storage media?
- Configuration
 - Installation
 - Upload
 - Storage
14. A teacher asks you to format all headings in a document with the same font, size, and boldness. What feature should you use to avoid repeating steps for each heading?
- Format Painter
 - Header/Footer
 - Themes
 - Styles
15. Which of the following ensures that a specific font and spacing format is applied every time you use a heading?
- Templates
 - Styles
 - Bookmarks
 - Fields
16. You want a picture to move in a zigzag pattern when the slide is played. Which feature should you apply?
- Slide Transition
 - Custom Animation
 - Rehearse Timings
 - Slide Master
17. Which function should be used to find the lowest mark in a test stored from D1 to D30?
- MIN(D1:D30)
 - MAX(D1:D30)
 - AVERAGE(D1:D30)
 - COUNT(D1:D30)
18. If data is entered in cells F2 to F11, which function counts all non-empty cells, including symbols?
- COUNT(F2:F11)
 - COUNTA(F2:F11)
 - COUNT(F2:E11)
 - AVERAGE(F2:F11)

19. A user wants to highlight all scores below 50 in red. Which feature should be used?

- Data Validation with a warning
- Conditional Formatting using a 'Less Than' rule
- Conditional Formatting using a 'More Than' rule
- Conditional Formatting and Sorting the data

20. What is the best tool to use when an application hangs in Windows?

- Command Prompt
- Control Panel
- Task Manager
- Google

21. You are told to end a background process using Task Manager. What should you avoid doing?

- Sorting by memory usage
- Ending critical system processes
- Looking at network stats
- Checking CPU performance

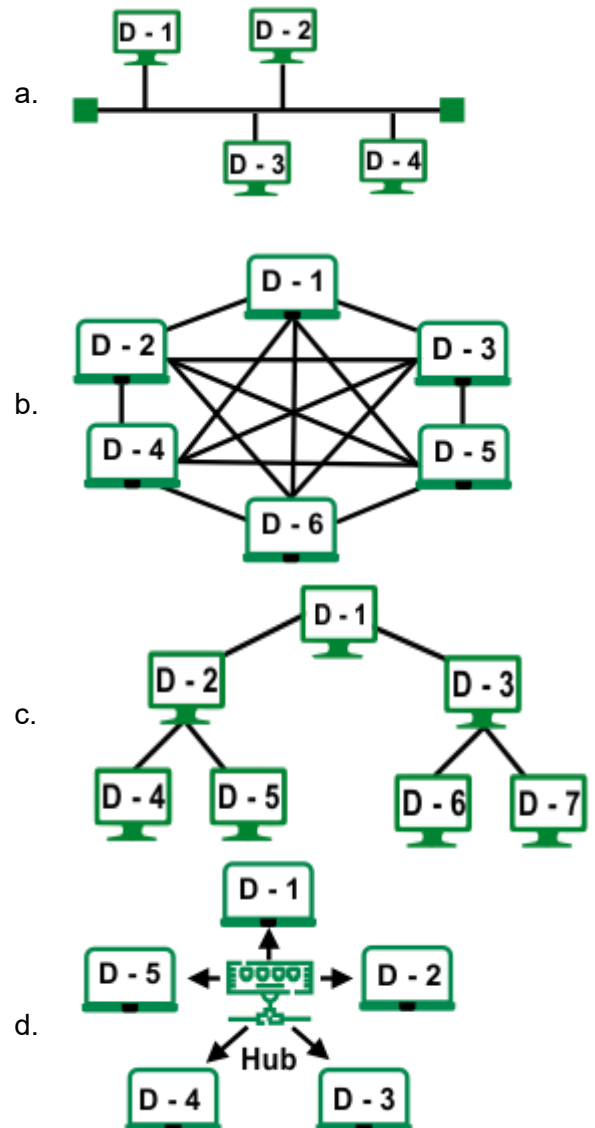
22. Your device connects to Wi-Fi but shows 'No Internet'. What should you do first?

- Update the printer
- Restart the router
- Change your wallpaper
- Reinstall the browser

23. How can you check if the issue is with your Wi-Fi or the internet provider?

- Check battery usage
- Open your photo gallery
- Try using mobile data to open the same website
- Adjust brightness settings

24. In which topology is data sent to all devices and only the intended one accepts it?

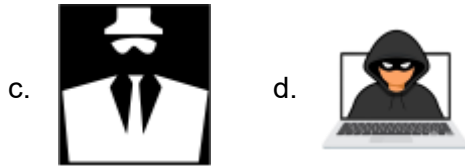


25. You want your sprite to shout 'Yay!' in a comic-style speech bubble only when clicked. Which is most appropriate?

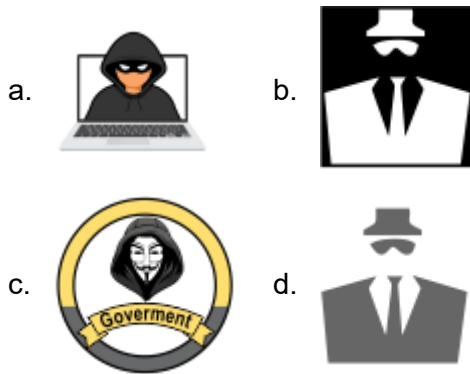
- when green flag clicked + say 'Yay!'
- when sprite clicked + think 'Yay!'
- when sprite clicked + say 'Yay!'
- when space key pressed + say 'Yay!'

26. Sonal opens her saved Scratch project but cannot find a particular sprite she had created earlier. What could be a likely reason?
- She renamed the sprite
 - She accidentally deleted it
 - The sprite moved to a hidden layer
 - The sprite turned invisible
27. If you want to draw half a circle using the 'repeat' block and turn 1 degree each time, how many repeats are needed?
- 90
 - 100
 - 180
 - 360
28. If a sprite keeps rotating by 60 degrees and drawing a line, how many lines will complete the pattern?
- 8
 - 6
 - 4
 - 5
29. A student browses a site with a padlock and 'https://' in the URL. What does this protocol ensure?
- Secure file transfer
 - Anonymous browsing
 - Encrypted data transfer
 - File download without login
30. Which domain ending is most often associated with colleges and universities?
- .edu
 - .co
 - .net
 - .org
31. If you only want videos in your language while searching globally, which YouTube filter should you use?
- Duration filter
 - Language filter
 - Upload date
 - Sort by view count
32. Which of these best describes cookies in web browsing?
- Files that update software
 - Files that clean viruses
 - Files that delete history
 - Files that store user data
33. If a robot speeds up when entering a dark tunnel, what feedback sensor might be involved?
- Light sensor
 - Temperature sensor
 - Sound sensor
 - Proximity sensor
34. Why might a robot have both a light and a proximity sensor?
- To detect sound and heat
 - To measure speed
 - To better understand environment
 - To improve battery life
35. A robot records room light levels every hour. What is this called?
- Navigation
 - Data logging
 - Feedback control
 - Line following
36. What type of AI is likely involved when AI is suggesting music?
- Recommendation System
 - Data Mining
 - Voice Assistant
 - File Sharing
37. An unskilled hacker tries to break into systems using YouTube tutorials and ready-made code. Which type of hacker is this?





38. What best describes a hacker who attacks military targets under government command?



39. A teacher asks students to name a company that makes processors mostly for iPhones and iPads. What's the correct choice?



40. If a student buys a Chromebook, which processor brand is most likely inside?



Achievers' Section (Each Question is 2 Marks)

41. In a HYBRID topology, what is the main characteristic?

- It combines features of two or more different topologies
- All devices are connected in a single loop
- All devices connect to a central hub
- Each device has only one connection to another device

42. Fill in the blank:

- Webpage on the web can be _____ by anyone.
- Internet is used to send cards called _____.
- You can _____ an image from Internet.
- _____ founded the search engine 'GOOGLE'.

- a. write, e-shops, save as, sergey brin
- b. edit, e-mails, copy, bill gates
- c. delete, e-cards, remove, mark zuckerberg
- d. read, e-greetings, save, larry page

43. What most likely uses binary processing indirectly when functioning?

- a. Cycling with a GPS tracker
- b. Running a smart washing machine
- c. Reading sensor data on a dashboard
- d. Measuring voltage using a multimeter

44. Which memory temporarily stores data and instructions for the CPU to use?

- a. Volatile memory
- b. Non-volatile memory
- c. External storage
- d. Network vault

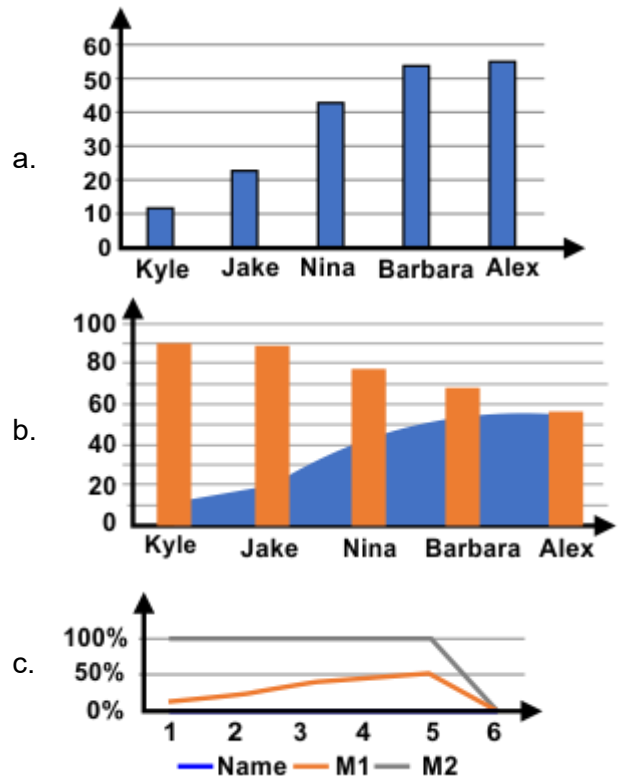
45. Why might a teacher prefer using footnotes over endnotes in a student's essay?

- a. To save space at the end.
- b. To improve readability on the same page.
- c. To print an essay on fewer pages.
- d. To change fonts easily.

46. When editing a table, how do you remove extra rows?

- a. Resize the slide
- b. Use 'Delete Row' from Layout tab
- c. Apply a different theme
- d. Change SmartArt layout

47. Which chart allows you to see both values and percentages in the same visual?



48. A browser shows 'No Internet' even when other apps are working. What's your first move?

- a. Check browser network settings
- b. Open an offline game
- c. Update device wallpaper
- d. Log into another app

49. What happens if the pen is not lifted between sprite rotations while cloning?

- a. Clones will not appear
- b. All lines will overlap perfectly
- c. Pattern becomes invisible
- d. Lines will connect all the clones

50. A librarian shares a link to a secure file server for downloading e-books, requiring a password. Which protocol is most appropriate?

- a. ftp://
- b. http://
- c. Sftp://
- d. www.

Answer Key

- | | | | | | | | | | |
|-------|-------|-------|-------|-------|-------|-------|-------|-------|-------|
| 1. b | 2. d | 3. b | 4. d | 5. a | 6. b | 7. a | 8. b | 9. b | 10. b |
| 11. c | 12. a | 13. b | 14. d | 15. b | 16. b | 17. a | 18. b | 19. b | 20. c |
| 21. b | 22. b | 23. c | 24. a | 25. c | 26. b | 27. c | 28. b | 29. c | 30. a |
| 31. b | 32. d | 33. a | 34. c | 35. b | 36. a | 37. a | 38. c | 39. c | 40. c |
| 41. a | 42. d | 43. b | 44. a | 45. b | 46. b | 47. b | 48. a | 49. d | 50. c |