



CREST Cyber Olympiad (CCO)

Previous Year Paper

Class 4 (Set - A)

Time Allowed: 1 hour

Maximum Marks: 45

- There are a total of **35 questions** in this booklet comprising **2 sections** namely the **Computer & IT and Achievers' Section** consisting of **25 questions (1 mark each) & 10 questions (2 marks each)** respectively.
- There is **no negative marking**. The use of a calculator is not permitted.
- There is **only ONE correct option** to a given question.
- The use of unfair means may result in the cancellation of the exam. Any such instances must be reported at **+91-98182-94134** or **info@crestolympiads.com**

DO NOT OPEN THIS BOOKLET UNTIL ASKED TO DO SO

FILL IN THE DETAILS

Candidate Name: _____

Class: _____ Section: _____

CREST ID: _____

Computers & IT (Each Question is 1 Mark)

1. Complete the following sentence:
In MS Word, to save an existing document with a different file name, click _____.

- a. save button on the standard toolbar
- b. save on the file menu
- c. save as button on the standard toolbar
- d. save as on the file menu

2. What is the shortcut key to go to the last line in an MS Word document?

- a. Ctrl + Last b. Ctrl + L
- c. Ctrl + End d. Alt + End

3. Which of the following best describes the term data processing?

- a. The collection of information or data
- b. The distribution of information or data
- c. The manipulation of information or data
- d. The storage of information or data

4. The image below shows a part of the MS Word Screen being used to change the _____.



- a. right indent
- b. left indent
- c. line and paragraph spacing
- d. remove space before paragraph

5. Fill in the blank:
The software which controls and organizes the working of a computer is called a/an _____.

- a. application software
- b. operating system
- c. DTP software
- d. utility software

6. Complete the following sentence:
In MS Paint, Strikethrough means _____.

- a. draw a line below of the text
- b. draw a line in the middle of text
- c. draw a line above of text
- d. draw a double line in the middle of text

7. Fill in the blank:
Hyperlink can be made using _____.

- a. Word b. Image
- c. Icon d. All of these

8. Which of the following options shows the strikethrough effect?

- a. Hello b. Hello
- c. ~~Hello~~ d. None of these

9. Which of the following is a free video chat service from Google that allows you to chat a maximum of ten people at a time?

- a. Google Nexus
- b. Google Hangout
- c. Google Trends
- d. Google Chrome

10. Identify the type of software with the help of the description given below:

- 1. It performs specific tasks for an end-user.
- 2. It is designed to help people perform an activity.
- 3. Depending on the activity for which it was designed, it can manipulate

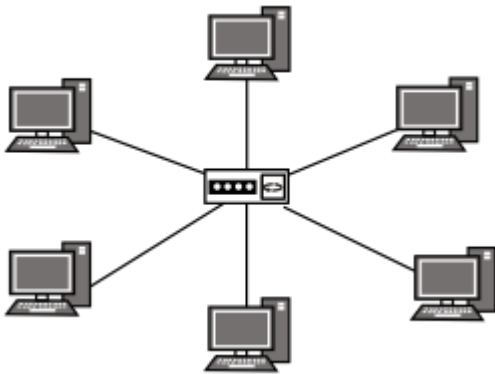
text, numbers, audio, graphics, and a combination of these elements.

- a. System Software
- b. Application Software
- c. Utility Software
- d. Operating System Software

11. Lisa wants to send an electronic message to a friend. She should use which of the following types of application?

- a. Word processing
- b. E-mail
- c. Spreadsheet
- d. Paper and pencil

12. What type of network is shown in the given image?



- a. LAN
- b. WAN
- c. MAN
- d. PAN

13. Identify the icon:



- a. Computer
- b. Recycle panel
- c. Network
- d. Control panel

14. Sophia wants to open the right-click menu using only the keyboard. She presses F10 and another key. What key combination did she use?







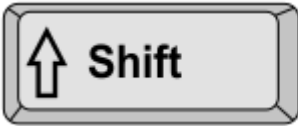



15. A student wants to open the Action Centre quickly. Which shortcut should they use?



16. What is the purpose of the RUN dialog box in Windows?

- a. To quickly access programs and settings
- b. To remove unnecessary files
- c. To install new software
- d. To close background applications

17. Which shortcut key opens the RUN dialog box?

- a.  + 
- b.  + 
- c.  + 
- d.  + 

18. Your classmate says their tablet is slow. What should they try first?

- a. Close unused apps
- b. Change the wallpaper
- c. Install more games
- d. Buy a faster tablet

19. Harper wants to copy a slide and make a few changes without losing the original. What should she do?

- a. Click 'New Slide'
- b. Copy and paste the slide
- c. Slides can not be copied
- d. Hide the original slide

20. James added a new slide, but it's empty. What could be the reason?

- a. He chose a blank layout
- b. He deleted the text boxes
- c. He chose a Plain layout
- d. He added a shape on the slide

21. A file named 'FlyingBird.svg' is most likely used for what?

- a. An image file
- b. A text file
- c. An audio file
- d. A video file

22. A file with .mp4 extension is used to store what?

- a. Drawings
- b. Music
- c. A video
- d. Text

23. Where do you find the option to enable the ruler in Ms Paint?

- a. View tab
- b. File tab
- c. Insert tab
- d. Transitions tab

24. Which of these is crucial for GPS to work correctly?

- a. Wind speed
- b. Battery
- c. A mobile phone
- d. Satellite signals

25. Which of these can help improve a GPS device's performance?

- a. Using it in open sky
- b. Switching it off
- c. Standing near tall buildings
- d. Keeping it in a metal box

Achievers' Section (Each Question is 2 Marks)

26. While writing a newspaper article it is often required to write the document in two or three columns. Which of the following is the right option in MS Word to achieve this?

- a. Page Layout > Columns
- b. Insert > Table
- c. Design > Columns
- d. Design > Size

27. Which of the following holds the smallest amount of data?

- a. 10 Byte
- b. 8 Bit
- c. 5 Megabyte
- d. 100 Kilobyte

28. Match the following:

	Column A		Column B
1.	Internet	a.	The practice of interconnecting multiple computer networks
2.	Intranet	b.	A controlled private network that allows access to partners, vendors and suppliers or an authorised set of customers
3.	Extranet	c.	A private network, operated by a large company or other organisation
4.	Internetwork	d.	A vast network that connects computers all over the world

- a. 1 - c, 2 - b, 3 - a, 4 - d
- b. 1 - b, 2 - c, 3 - d, 4 - a

- c. 1 - d, 2 - c, 3 - b, 4 - a
- d. 1 - c, 2 - a, 3 - d, 4 - b

29. Fill in the blanks in context to MS Word:

1. WordArt is always typed inside a _____.
2. Home tab is used to _____.
3. Thesaurus gives a list of _____ for a given word.
4. Times New Roman, Comic Sans and Calibri are called _____.

- a. 1 - column, 2 - change style, 3 - synonyms, 4 - variations
- b. 1 - symbol, 2 - change paragraph formatting, 3 - antonyms, 4 - font size
- c. 1 - education, 2 - change paragraph colour, 3 - synonyms, 4 - font colour
- d. 1 - text box, 2 - change font style and colour, 3 - synonyms & antonyms, 4 - fonts

30. Match column A with column B:

	Column A		Column B
1.	Stores information	a.	Click
2.	The output is seen on paper	b.	CPU
3.	The brain of the computer	c.	DVD
4.	Press the left mouse button once and then release	d.	Hard copy

- a. 1 - c, 2 - d, 3 - a, 4 - b
- b. 1 - d, 2 - c, 3 - b, 4 - a
- c. 1 - d, 2 - c, 3 - a, 4 - b
- d. 1 - c, 2 - d, 3 - b, 4 - a

31. What happens when you type a web query into the Windows Search bar?
- It opens Bing search results in a browser
 - It searches only local files
 - It opens the Control Panel
 - It runs a system scan
32. What is a sign that your computer might need a restart?
- All the applications become very slow.
 - The keyboard stops working.
 - The cursor moves randomly on the screen.
 - The screen turns off, but the computer is still running.
33. Zoe needs to insert a slide between slides 2 and 3. What's the best way?
- Click on slide 3 and press 'New Slide'
 - Delete slide 2
 - Click on slide 1 and press 'New Slide'
 - Click on slide 2 and press 'New Slide'
34. You opened a website, and it looks very strange. Images are missing, and links don't work. What could be the best first step to solve the problem using your web browser?
- Clear browsing history
 - Refresh the page
 - Change desktop background
 - Open a game
35. When should you turn on grid lines?
- To check spelling in Word
 - To start a slideshow in PowerPoint
 - To apply animations
 - When placing shapes or text boxes neatly

Answer Key

- | | | | | | | | | | |
|-------|-------|-------|-------|-------|-------|-------|-------|-------|-------|
| 1. d | 2. c | 3. c | 4. c | 5. b | 6. b | 7. d | 8. c | 9. b | 10. b |
| 11. b | 12. a | 13. d | 14. a | 15. b | 16. a | 17. b | 18. a | 19. b | 20. a |
| 21. a | 22. c | 23. a | 24. d | 25. a | 26. a | 27. b | 28. c | 29. d | 30. d |
| 31. a | 32. a | 33. d | 34. b | 35. d | | | | | |